



Museum of the Islands Spring 2026 Newsletter

.....



Into Spring 2026

by Karen Hartshorne, President

Welcome home to all of our members back on the island.

We can't wait to show you what we've been working on lately in the museum. If you haven't been in for a while come visit. We have two new exhibits.

We are open 11am-3pm on Tuesdays, Wednesdays, Thursdays, Fridays and Saturdays 11-3 through April. In May we will return to our Summer hours opening Tuesdays, Thursdays and Saturdays, 11-3.

We've added Museum of the Island Newsletters from past years to our website archives. You may view them [here](#).

If you aren't a member, or would like to join please visit the museum, or [mail in your form](#).

Looking for something to do that is fun and helps others? Volunteer at the museum. We would love to have you join our Team.

THIS Winter's
TOP STORIES

We've Been Busy!



On exhibit, this reproduction of a Confederate Model 1851 Colt Navy Revolver, restored and donated by Richard Hoyle and Mike Perrigo.

Visit the museum for new exhibits in the works. We have received other donations that you will be able to enjoy in the near future.

[Pine Island Oral History Project](#) channel includes Pioneers, Discovering the Calusa, Fisher Folk, and special guests. We cherish these interviews and know you will too. This youtube series records history with interviews of people on Pine Island.

We've been stocking our Gift Shop

Our gift shop is stocked with goodies. We have Museum of the Islands t-shirts, books, original artwork, archival art supplies, jewelry, notecards, and framed reproductions of photos you love. Have you seen our Museum of the Island button pins?



We have weekly sales. Watch for them on our sandwich board in the front. If you are not in town we are happy to ship to you.

We've been having fun

In March we had free art lessons for children each Tuesday. 🌟 A huge Thank You to sponsors of the Children's Art Program: The Kiwanis Club of Greater Pine Island, Williamson Brothers and other private sponsors and fellow artists. Our special thank you to the Pine Island Art Association for the use of their building at Matlacha Community Park during March on Tuesdays so that we could offer free classes to children. 🌟



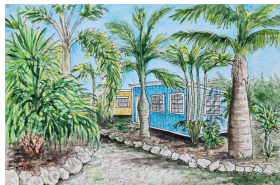
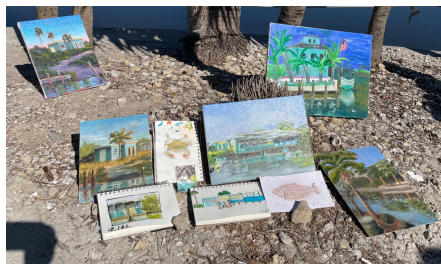
We've been painting history

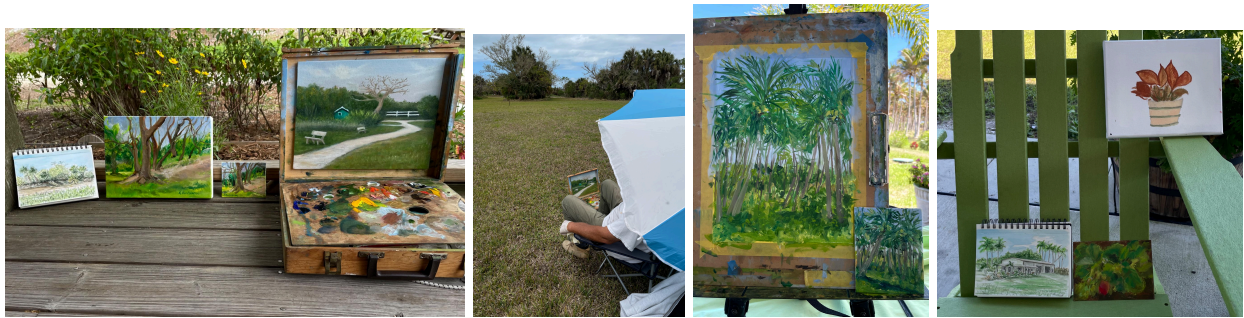
Out and about plein air painting, the Pine Island Plein Air History Painting Group is always discovering new things. We've painted all over the island this past year and learned so much about these historical places.

We would love to have you join us. Bring your own supplies, the cost is free and all ages are welcome. To view our schedule visit [Paint](#) on the museum's website. You may also



join the group on Facebook, [Pine Island Plein Air Painters of History](#).





Later This Year 2026

If you are not a member, or would like to renew your membership you may visit our [page](#), come into the museum and see us, or mail it in to PO Box 103, Matlacha, FL 33993.

You may also purchase tickets to the museum for \$3 each to give to a friend or customer. We also have gift certificates.

We would love to have you join us as a Volunteer in the museum. The people you meet, stories you hear and things you will learn about this area are wonderful. Come have fun with us and make a difference. Be a part of the museum's legacy.

Need to get in touch with us?

Museum Phone 239-283-1525

Gift Shop giftshop@museumoftheislands.com

Mail PO Box 103, Matlacha, FL 33993



Museum of the Islands
5728 Sesame
Bokeelia, Florida
museumoftheislands.com